

# 2020 Report of **GRATITUDE**

Honored to Serve  
Nebraska for 55 years



# TABLE OF CONTENTS

**03**

Letter From the  
Board of Directors  
Chair

**04**

Note From the  
Executive Director

**05**

Celebrating 55 Years of  
the Foundation

**06**

Investing with the  
Foundation: As Easy as  
1-2-3

**07**

The Legacy of Rev.  
Dr. George and Mrs.  
Wilma Clay: Win Souls  
Right Where You Are

**08**

#NEMethodistStrong

**10**

Anny Kapundu: From  
Congo to Silver Creek

**11**

East African Refugees  
Find a Home at Saint  
Paul Benson

**12**

NUMF Awards Local  
Pastor and Seminary  
Scholarships

**13**

\$50,000 Distributed in  
New Start/New Faith  
Community Grants

**13**

The Spirit of Christmas  
Project 2020

**14-15**

2020 Ministry Financial  
Report

**16**

Gifts from the Heart  
55th Anniversary  
Memorials and  
Honorariums

**17**

Gifts from the Heart  
Five Hearts Society

**18**

Affiliated Churches  
and Camps

**19**

Board of Directors and  
Administration



# LETTER FROM THE BOARD OF DIRECTORS CHAIR



Dear Friends,

The word “unprecedented” has been used so often to describe the year 2020 that it’s lost much of its power, but truly, the year was unprecedented. A global pandemic that reminded us of how connected we all are, individually and collectively, to one another in our communities, our nation, and the world. Within a matter of a few weeks, most of the daily activities in our lives, everything from going to school to going to work to buying groceries to seeing a physician to seeing members of our family changed. Nebraska’s churches were not exempt from this; worship, Sunday School, activities, classes and meetings were altered, too, and we struggled and succeeded (mostly) to maintain our connections in new ways.

Strengthening the connections among and between Nebraska United Methodists is at the heart of what the Foundation does. Recognizing the unusual financial stresses placed on local churches by the pandemic, the Foundation distributed \$40,000 in unrestricted grants to more than 140 Nebraska United Methodist Churches in May. We followed that in January of 2021 with a second distribution of \$55,000 to more than 120 churches. These grants were made possible by generous individual donors and through the Gifts from the Heart endowment funds. In 2020, as in other years, the Foundation provided scholarships for fifteen students in seminary, and for the first time, we also provided four

**“Strengthening the connections among and between Nebraska United Methodists is at the heart of what the Foundation does.”**

scholarships to persons preparing to become licensed local pastors. The Foundation provided ministry grants to support new or developing ministries to nearly 30 churches in the state. Lunch and Learn sessions, offered via Zoom, provided opportunities to learn more deeply in the area of stewardship, and the Zoom format enabled participation by Nebraska United Methodists from across the state. And the investment and management services provide expertise and stability to Nebraska United Methodist Churches to support their own stewardship efforts, enabling them to grow in ministry. All of this is possible because of generous donors to the Foundation; thank you.

In this year of challenges to find new ways to forge and strengthen connections, to provide services to local churches and individuals, and communicate and relate in every way but face to face, the Foundation staff has more than risen to the task. We are well served by Jackie Urkoski, Executive Director of the Foundation, Marci Logsdon, Director of Finance,

Rev. Matt Fowler, Director of Stewardship, and Christy Bousquet, Administrative Assistant. Together, they bring mission, commitment, and amazing gifts in service to Nebraska churches, pastors, and laity....and to the Foundation’s role in being a partner in ministry with you.

God’s blessings to you and yours,

Dr. Marilyn S. Moore  
Chair, Board of Directors

**THANK YOU FOR LETTING US BE  
‘YOUR PARTNER IN MINISTRY.’**



## A NOTE FROM THE EXECUTIVE DIRECTOR

The Nebraska United Methodist Foundation was established in 1965, in general, to promote wills and bequests as tools to sustain churches. Since then, the Foundation has evolved into a 'Partner in Ministry', working to provide a variety of financial resources to church committees, pastors and members. We provide guidance to you and your church on how to expand and financially sustain your ministries. We also provide guidance to you, as an individual on how, through small efforts, you can help to sustain your church well into the future and create a legacy while doing so. Many times,

these conversations and partnerships develop into friendships. The friendships established over the last 55 years are invaluable and we look forward to building many more over the next 55 years. We understand that as a church, you may be facing some changes in your own future. Rest assured no matter the path your church takes, our partnership, and friendship, will continue. We look forward to talking with you soon.

Blessings to each of you,

Jackie Urkoski  
Executive Director

**REST ASSURED NO MATTER THE PATH YOUR  
CHURCH TAKES, OUR PARTNERSHIP, AND  
FRIENDSHIP, WILL CONTINUE.**







# CELEBRATING 55 YEARS OF THE FOUNDATION

Preceded by the work of Rev. Harold Bryant (and perhaps others) in encouraging estate gifts for the benefit of Conference ministries, the Foundation began out of a General Conference provision in 1964 stating that the Board of Lay Activities should have a Wills and Bequests Program, and officially in 1965, the Nebraska Methodist Foundation was formed to support and manage this activity. A few years later, the name was changed to the Nebraska United Methodist Foundation. In 1978, a provision was made for funding a Director of Stewardship and Estate Planning through several avenues, and an official position to promote the work of the Foundation was created.

Over the years, the vision of the Foundation has changed but the mission remains the same: to support the ministries of the

local church and the Conference through the development of gifts and the stewardship of resources entrusted to the Foundation in support of God's work. Our vision has shifted from simply encouraging estate gifts for the benefit of ministries to being a true all-encompassing 'Partner in Ministry.' Through the years, the Foundation has evolved from mainly providing investment services to being an innovative body that creates resources unique to the needs of Nebraska churches. Over time and with the help of generous donors and good stewardship, we have been able to add ministry grants, new church start-up grants, seminary scholarships, local pastor scholarships, and event sponsorships to our ever-growing list of resources for churches. These programs are in addition to our long-time services of

endowment fund education for committees and congregations, estate and legacy planning workshops, congregational stewardship, and working with individuals who desire to leave a legacy. Our Gifts From The Heart program was a main resource for the COVID-19 Grants distributed to churches twice throughout the pandemic to help in a time of need.

While it is important to reflect on the past 55 years, we also find value in looking ahead to the next 55 years. As the Church continues to change and evolve, the Foundation will continue to stand strong in its service to you and its vision of being 'Your Partner in Ministry.'

## 55 YEARS OF EXECUTIVE DIRECTORS

1966-1968

NORMAN  
KAUBLE

1968 - 1977

POSITION  
VACANT

1978-1983

FRED  
ROBERTS

1983-1989

REV. CECIL  
LACKORE

1990-1997

REV. FRED  
LODER

1997-2010

JIM  
HELLER

2011-2018

ANITA  
CRISP

2019-PRESENT

JACKIE  
URKOSKI

# INVESTING WITH THE FOUNDATION: AS EASY AS 1-2-3

**1**

## DISCUSS

Visit as a committee and discuss options with the Foundation.

The Foundation welcomes the opportunity to meet with the necessary committee(s) to discuss our investment services and answer any questions you may have.

**2**

## DECIDE

As a committee, decide how you want the funds invested.

The Foundation has five funds available with varying degrees of earnings and growth, ranging from conservative to aggressive.

**3**

## DEPOSIT

Complete an investment management agreement and mail in or wire your deposit.

The agreement is simple and customizes your account to your committee's wishes.

The funds are available to you when and how you choose as set forth in the stipulations of your agreement. The Foundation encourages you to preserve the principal of the fund by only using the earnings of the fund. The current recommended distribution rate from each fund is 4.5%. Distributions can be upon request or automatically, either quarterly or annually. Some churches choose not to take a regular distribution but rather let the fund grow for a rainy day. The most important thing to remember is that this money is **YOURS**. When you deposit your money into the Foundation, you remain the owner. It is available to you anytime you need it.

Advantages to investing with the Foundation include: socially responsible investing as guided by the Book of

Discipline, low minimum deposit of \$1,000, ongoing oversight by the Foundation's Board of Directors, quick and convenient access to invested funds with deposits and withdrawals allowed at any time and without fees, separate quarterly reports for each account (monthly reports online), and the availability of innumerable, separately administered accounts.

Most importantly, you have access to the Foundation's wealth of knowledge, financial tools, resources, and staff, and with that comes the peace in knowing that you are working with an entity that solely exists to help you and your church grow and be successful. We look forward to hearing from you soon!

"We have taken these steps because we trust in the care that will be given to us and these endowment funds by the Nebraska United Methodist Foundation. We have been pleased with the services provided to us and we appreciate the customer support we have received. The quarterly reports that are provided, the return of phone calls and the kind responses to our questions have all been greatly appreciated. One of the things that we have appreciated is the peace of mind that we have. We know that our funds are cared for and invested well and that we do not need to frequently re-evaluate where to invest our principal, since the Foundation takes care of that for us.

REV. CHUCK RAGER, OGALLALA UMC

# THE LEGACY OF REV. DR. GEORGE AND MRS. WILMA CLAY: WIN SOULS RIGHT WHERE YOU ARE

In honor and celebration of Rev. Dr. George and Mrs. Wilma Clay, their four children have established a scholarship for local pastors by generously establishing an endowment fund at the Foundation. "Bro" and "Sis" Clay each had a heart OF a pastor and a heart FOR pastors. They experienced hard times and struggled like all small church pastors do, but their love for people and their passion for bringing people into the ministry never wavered. Wilma was born and raised in the panhandle of Oklahoma by devout Christian parents. She was involved in church work from a young age as a musician and gospel worker. George grew up in the Ozarks of Missouri. His ministry began at nine years of age assisting his evangelistic parents in singing and playing the guitar. He pastored his first church at age 17. George and Wilma met at a revival meeting George's parents were holding in the panhandle of Texas. Wilma was playing the piano and singing and George knew then that she was the one. After the event, he sent a note to the schoolhouse where she was teaching that said "Will You Marry Me?" Three days later on November 26, 1946, they were married. They spent their honeymoon at Bible School in Baxter Springs, Kansas. They were married 64 years and 10 months until they parted on September 9, 2011 when Wilma, at the age of 87, went to meet the Lord. She passed away while in George's arms as he was praying for her. George continued relentlessly to minister in word and music up until two days before the Lord took him home on December 23, 2019, at the age of 93.

During their almost 65 years in ministry together, they evangelized, pastored and ministered in multiple churches in many states including Arkansas, Oklahoma, Kansas, Texas, Missouri, Colorado, Wyoming, Florida, Louisiana, Nebraska and Indiana. They ministered in mission work in Juarez, Mexico and British Honduras, building churches and winning souls for the Lord. Their marriage is a true and blessed love story richly rewarded by serving God faithfully and diligently. They believed and taught that

everyone is a minister of the gospel and that labels placed on people by the world are not what matters. Reaching out, winning souls where you are, and bringing others into service for the Lord is what matters now and eternally. To continue the legacy they built, the children of George and Wilma wish to support all those who 'minister where they are,' focusing especially on Nebraska's local pastors. Because of this, the children, including Rev. Lance Clay of Nebraska, set up the "Rev. Dr. George and Mrs. Wilma Clay Local Pastor Scholarship", which will be awarded annually to Nebraska Local Pastors. In this way, the love and passion this couple had to encourage others to "win souls right where you are" will continue through the good work of our Local Pastors.



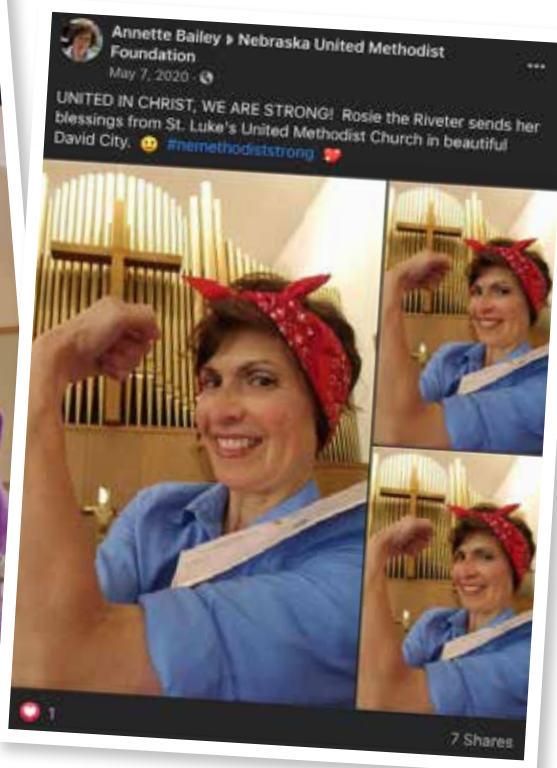


# #NEMETHODISTSTRONG

**DUE TO THE GENEROSITY OF INDIVIDUAL DONORS AND CONTRIBUTIONS FROM THE FOUNDATION'S GIFTS FROM THE HEART PROGRAM, THE FOUNDATION AWARDED OVER \$40,000 TO MORE THAN 140 CHURCHES IN NEBRASKA THAT HAD BEEN NEGATIVELY IMPACTED BY THE COVID-19 PANDEMIC.**

Grants in the amount of \$300 assisted churches in mission and ministry, greatest needs, technology needs and other areas.

In an effort to connect churches during the isolation of the early pandemic months, the Foundation staff issued a 'selfie challenge' where churches were encouraged to post a selfie on the Foundation Facebook page once they received the grant with the hashtag **#NEMethodistStrong**. Any church that shared a selfie was entered into a drawing for a gift basket that included a matching \$300 grant. Over 50 churches participated in this challenge, which was one of the highlights of the year for Foundation staff. Here you are invited to partake in some of the joy we felt when looking through the many Facebook posts:





# REPORT OF GRATITUDE

"Thank you Nebraska United Methodist Foundation for your support from Nebraska City First United Methodist Church represented by Pastor Charles Kathurima M. and Luke Partsch, IGNITE youth leader."  
#NEMethodistStrong



Jackie Blocher ▸ Nebraska United Methodist Foundation  
3 mins · 🌐  
We at Trinity UMC/UCC West Point NE thank you for caring!



The Syracuse United Methodist Church is grateful to our friends at the Nebraska United Methodist Foundation for the COVID-19 Emergency Grant. United in Christ, we are STRONG!  
#NEMethodistStrong #praise #UMC



#NEMethodistStrong from Aldersgate in Lincoln. Thank you for the support!



Methodist Church Scottsbluff is at Nebraska United Methodist Foundation.  
Yesterday at 10:27 PM · Lincoln · 🌐

We would like to thank the Nebraska United Methodist Foundation for their generous gift towards our new audio/visual equipment.



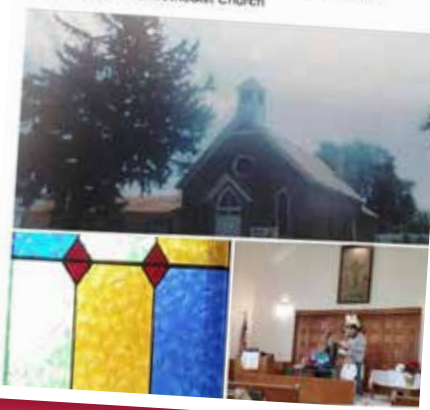
We love to make it fun to get the mail. Saint Paul you are a blessing to all. #NeMethodistStrong.

Jane Florence ▸ Nebraska United Methodist Foundation  
Yesterday at 5:32 PM · 🌐  
Sherry, our Finance Manager, is excited to get the mail these days! Thank you for your support, Nebraska UMC Foundation.



Alice Alexander  
2 hrs · 🌐

We would like to say Thank You for the Support you have shown Our Church during this Covid-19. God is Good! Nemaha United Methodist Church



Corinthian Pointe  
23 mins · 🌐

A big thank-you to the Nebraska United Methodist Foundation for a grant to support the Open Shelf food pantry during these times when our neighbors need it most! We're so grateful to have you as ministry partners. #NEMethodistStrong







# ANNY KAPUNDU: FROM CONGO TO SILVER CREEK

Throughout her childhood, Anny Kalingwishi Kapundu had devoted herself to the work of her United Methodist Church in Mulungwishi in Congo DR. Other people and her pastors began witnessing something more than ordinary in her way of serving the Lord. Soon, Anny began hearing the Lord's calling. She could not believe that God was choosing her and struggled to accept the calling, not finding the self-assurance she needed to feel as if she could do what God was asking. At the tender age of 16, Anny's father gave her a verse: "For I know the plans I have for you," says the Lord. "They are plans for good and not for disaster, to give you a future and a hope." As she worked to find the confidence to follow this calling, her father said to her, "Keep your dream and have a vision with the Lord."

This is exactly what Anny is doing today. She is currently serving the Twin Rivers United Methodist Parish in Silver Creek while going through the process of Local Pastor certification and ordination as Elder. As parents of three young boys, she and her husband struggle to find the financial support necessary to continue her journey, but she continues to follow her father's advice. As a recipient of Foundation

scholarships, Anny is grateful for this opportunity to continue her studies. Anny has this to say about people supporting the Foundation's scholarship program: "The donors might not see the great value, but they should be aware that their contributions are really impacting the lives of many of us. They are lifting up lives, careers and humanity. Their generosity has changed my life. I am so grateful to them and the Foundation. I pray for them and thank them."





# EAST AFRICAN REFUGEES FIND A HOME AT SAINT PAUL BENSON

2012 saw a new, unique and wonderful opportunity for Saint Paul United Methodist Church in the Omaha Benson area. The leadership and laity saw God's mission and ministry come, quite literally, knocking on their door. The family and friends that were at the door are primarily East African refugees who came through a refugee camp in Tanzania, coming from home countries Burundi, Congo, and Rwanda. The majority of this new congregation is under the age of 40, with a strong youth group and youth choir.

Worship is translated into both Kirundi and Kiswahili, and follows the traditional form of African Christian worship with blocks of time for music, prayer, scripture, personal testimony and preaching. Prior to the COVID-19 pandemic their worship attendance averaged 150.

The spring of 2020 saw a new and revitalized engagement with the congregation through the leadership of Saint Paul's Senior Pastor, Rev. Stephanie Ahlschwede. "We are now in a renewed phase of our relationship within the whole of the church where we are working together to develop

lay leadership in this part of the church, help credential the lay pastor, and provide equal access to pastoral care, membership classes, sacraments, and new programs."

There are many moving pieces that are necessary for all the work being done. From embracing God's call, to leadership and laity, to funds for implementing the mission. The Foundation's New Start/ New Faith Community Grant Program played a major role in funding this new start.

Rev. Ahlschwede shared that, "Funds from these grants were essential to supporting this part of our congregation to not just stay open but increase their reach during a global pandemic. Thanks to assistance from the Foundation, this group started live streaming in the summer of 2020, and now often draws over 600 views on Sundays. Comments on the live stream demonstrate that their reach is far beyond Omaha - to Burundi, to friends from refugee camp in Tanzania who are now scattered across the United States, and Kiswahili and

Kirundi speakers we may never meet who have found the livestream through word of mouth or internet search."

The grant helps to touch every part of the ministry being done at Saint Paul ranging from children to adults, and including translation and liturgy for Saint Paul's first Burundi wedding. "This grant helped us to give every child in the third grade through high school their own Bible - I have never seen a group of children so proud to receive their own Bibles; they spent the remainder of the worship service pouring over them, carefully turning the pages. So many children came forward we had to make a rush duplicate order to continue distributing them a second week."

It is our main goal, value, and priority to further the mission of building the kingdom of God here on earth. We can accomplish this in part through this very important grant in conjunction with the Conference.





# NEBRASKA UNITED METHODIST FOUNDATION AWARDS LOCAL PASTOR & SEMINARY SCHOLARSHIPS

The Nebraska United Methodist Foundation Board of Directors is pleased to announce the Foundation was able to distribute nearly \$30,000 in scholarships to 16 students pursuing the ministry. Congratulations to the following scholarship recipients for the 2020-2021 academic year:

**MANDY BARKHAUS**

Harlan and Mabelle Wyrick Memorial Scholarship

**CAITLIN BENTZINGER**

Cowles UMC Memorial Scholarship

**REBECCA BORGMAN**

Scahill Family Scholarship

Cal Leeds Memorial Scholarship

**MATTHEW BORLAND**

Floma Taylor Ministerial Scholarship

Harlan and Mabelle Wyrick Memorial Scholarship

Cowles UMC Memorial Scholarship

**ELIZABETH GRAVERHOLT**

Alice Kruse Ministerial Scholarship

Alva Clark Seminary Scholarship

**KAYLA HOUCK**

Floma Taylor Ministerial Scholarship

**KALINGWISHI ANNY KAPUNDU**

Harlan and Mabelle Wyrick Memorial Scholarship

Ben and Martha Simmons Scholarship

**ALBERT LONGE**

Floma Taylor Ministerial Scholarship

Verl & Sylvia Miller Memorial Scholarship

**CAMERON MILLER**

Alice Kruse Ministerial Scholarship

Alice Kruse Seminary Scholarship

Harlan and Mabelle Wyrick Memorial Scholarship

Myrtle E. Williams Seminary Scholarship

**KARISSA MILLER**

Andrew and Nevabelle Howe Scholarship

**LAMI OLADIMEJI**

Baldwin F. and Amy L. Kruse Scholarship

Floma Taylor Ministerial Scholarship

**HELEN PAUS**

Harlan and Mabelle Wyrick Memorial Scholarship

Charles and Marilyn Humphrey Seminary Scholarship

Alice Kruse Ministerial Scholarship

**MARIA PENROD**

Women in Ministry Scholarship

Rev. Albert W. Winseman Scholarship

Rev. Richard Atherton Memorial Scholarship

Darrell & Joyce Pickett Scholarship

**VICTOR PETERSON**

Floma Taylor Ministerial Scholarship

Albert R. Murdoch Ministerial Scholarship

**LOCAL PASTOR SCHOLARSHIPS:**

**JENICE EPP**

Frederick and Esther Paulus Local Pastor Scholarship

Gifts from the Heart Local Pastor Scholarship

**VENEDITH VARGAS**

Frederick and Esther Paulus Local Pastor Scholarship

**THESE SCHOLARSHIPS WOULD NOT BE POSSIBLE  
WITHOUT DONORS. THANK YOU TO ALL THE  
DONORS AND THEIR FAMILIES FOR RELIEVING THE  
FINANCIAL BURDEN OF OUR FUTURE PASTORS.**

# \$50,000 DISTRIBUTED IN NEW START/NEW FAITH COMMUNITY GRANTS

The Nebraska United Methodist Foundation would like to congratulate the following recipients of the New Start/New Faith Community Grant Program for 2020:

**NEIGHBORS CHURCH / Lincoln**

**CHRIST UNITED METHODIST CHURCH - CONNECTION POINT / Lincoln**

**SAINT PAUL BENSON UNITED METHODIST CHURCH / Omaha**

Due to the generosity of donors supporting congregational development through the Gifts From The Heart Endowment Funds, the Foundation was able to award \$50,000 in New Start/New Faith grants. These grants are available to enhance and support new church development and alleviate some of the financial burden. Grants are awarded annually. For more information on the New Start/New Faith Grant Program or if you would like to talk to the Foundation about how you can grow these types of grants, please contact us.

## THE SPIRIT OF CHRISTMAS PROJECT 2020

Each year during the Christmas season, the Foundation chooses two ministries to receive a surprise donation from the Foundation's Gifts From The Heart Endowment Funds. Known as **"The Spirit of Christmas Project,"** it is a way to give back and say thank you to all the individuals and organizations who have made unexpected gifts to the Foundation.

In 2020, the Foundation gifted \$1,000 each to the following two ministries:



### IMANI KENYA MISSION FUND - COFFEE PROJECT

Sponsored by Lovers Lane United Methodist Church Foundation in Dallas, Texas.

The Imani Kenya Mission helps to empower communities through planting and harvesting coffee which allows families to send their children on to higher education.



### SWAHILI PASTORAL EDUCATION PROGRAM

Sponsored by Saint Paul Benson United Methodist Church in Omaha, Nebraska.

The Swahili Pastoral Education Program is a new ministry within Saint Paul Benson to create Local Pastor Curriculum in Swahili which will be used locally and throughout the world.

# 2020

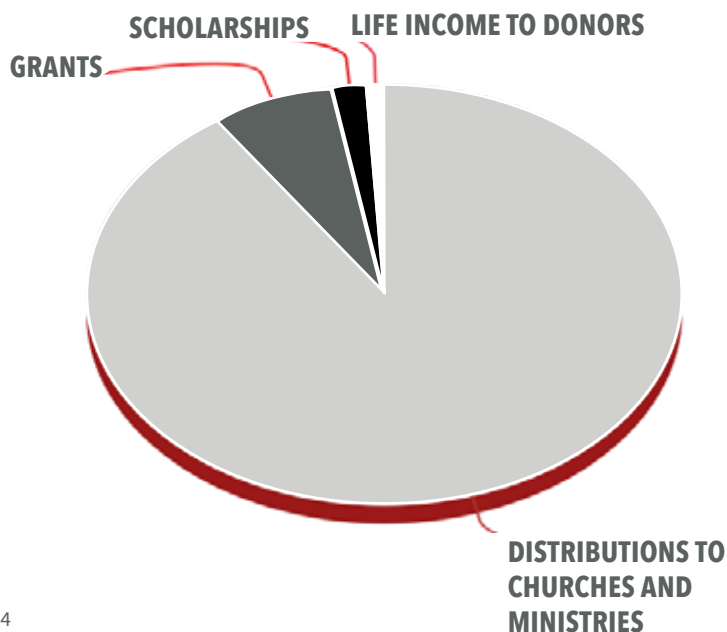
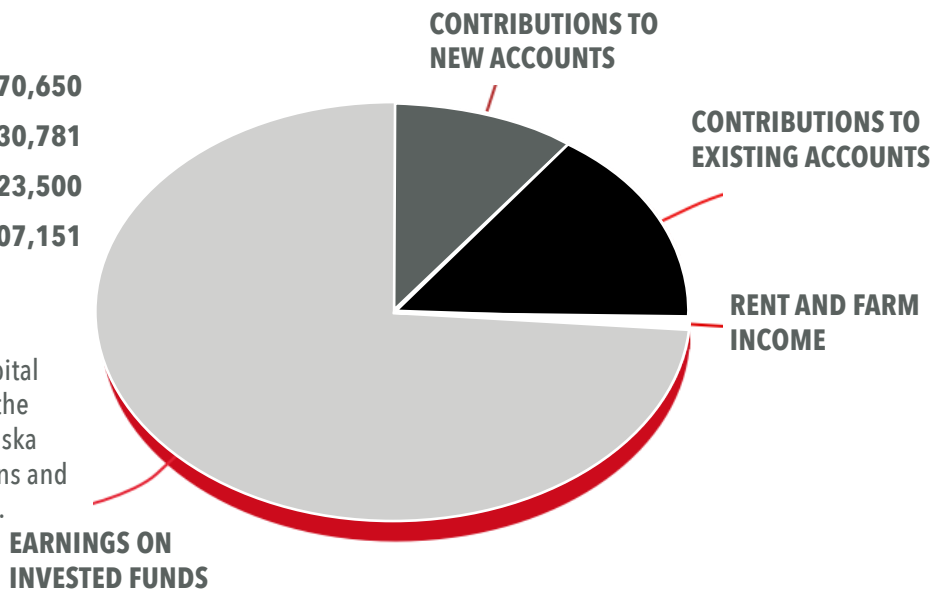
## TO THE CHURCHES, MINISTRIES, AND INDIVIDUALS WHO USE THE FOUNDATION'S SERVICES, WE WOULD LIKE TO THANK YOU FOR ALLOWING US THE OPPORTUNITY TO SERVE YOU.

For those who haven't yet experienced the services we can provide for you, we would welcome the opportunity to be your partner in Ministry. Our contact information is on the back of this report.

### INCOME

CONTRIBUTIONS TO NEW ACCOUNTS	\$770,650
CONTRIBUTIONS TO EXISTING ACCOUNTS	\$1,230,781
RENT AND FARM INCOME	\$23,500
EARNINGS ON INVESTED FUNDS	\$5,707,151

The Foundation provides **Investment Services** to help churches save and grow funds for ministry, capital needs, emergencies, and mission opportunities in the community and beyond. Our focus is to help Nebraska United Methodist churches and related organizations and ministries accomplish their goals and their mission.



### DISTRIBUTIONS

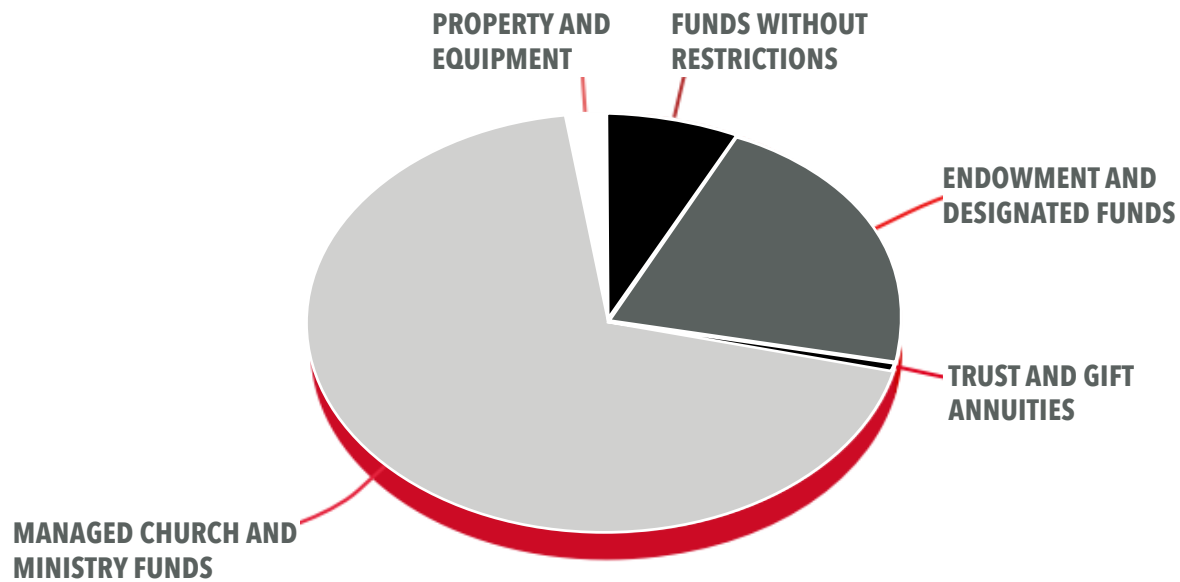
DISTRIBUTIONS TO CHURCHES AND MINISTRIES	\$2,496,156
GRANTS	\$185,745
SCHOLARSHIPS	\$50,472
LIFE INCOME TO DONORS	\$26,206

Individuals can create **Endowment Funds** and **Donor Advised Funds**, which can support their local churches or ministries for years to come.



# MINISTRY FINANCIAL REPORT

REPORT OF  
GRATITUDE



## TOTAL ASSETS: \$52,305,150

FUNDS WITHOUT RESTRICTIONS	\$3,852,132
ENDOWMENT AND DESIGNATED FUNDS	\$10,908,484
TRUST AND GIFT ANNUITIES	\$234,634
MANAGED CHURCH AND MINISTRY FUNDS	\$36,117,101
PROPERTY AND EQUIPMENT	\$1,192,799

**Charitable Remainder Unitrusts** and **Charitable Gift Annuities** are ways to provide life-time income for the donor and also leave a legacy.

There is also an opportunity for individuals to leave a Lasting Legacy through gifts to the Foundation's **Gifts from the Heart Endowments** which support Greatest Needs, Pastoral Education, Mission Work, Youth Camps, and New Faith-New Start Grants.

# **GIFTS FROM THE HEART:** 55TH ANNIVERSARY MEMORIALS & HONORARIUMS

**Thank you to those who made a gift in honor of the  
Foundation's 55th Anniversary:**

**ALLEN UNITED METHODIST CHURCH**

**REV. ROBERT E. BERLIE, SR.** / *In memory of Lily A. Berlie*

**JAMES E. & CONNIE COOK**

**ROBERT A. EMBREE** / *In memory of Valda J. Embree*

**RANDY FLEMING** / *In memory of Rosemary Stoll*

**JAMES W. HELLER** / *In honor of NUMF Board of Directors 1997-2010*

**JANICE JAPP** / *In memory of Walter Japp, Jr.*

**TOM KELL**

**GENE & SHIRLEY MERCER**

**DAVID & MARILYN MOORE**

**GWENDOLYN A. NEWKIRK**

**KRISTINE ROBERTS**

**UNION BANK & TRUST**

**MARILYN ZEHRING**



# **GIFTS FROM THE HEART:** **FIVE HEARTS SOCIETY**

The Foundation's Gifts from the Heart Endowment Funds are supported by the Five Hearts Society, a group of people who have pledged \$5,000 to be gifted over a five-year period. We would like to thank the current members of our Five Hearts Society for their commitment to this vision:

**ANONYMOUS**

**ED & CORA LOUTZENHEISER**

**SHIRLEY F. CRUMP**

**KIM & TOM DINSDALE**

**RANDY FLEMING**

**REV. LEONARD F. HARTWIG**

**JIM & ELDA HELLER**

**REV. DR. JANICE JAPP & DR. EDWARD MANTLER**

**REV. DR. MARVIN KOELLING**

**ALICE KRUSE**

**REV. DR. ALVA H. CLARK**

**REV. JOHN & RUBY MINERT**

**DR. GWENDOLYN NEWKIRK**

**DAVID & LORI PANKONIN**

**STEPHEN & SUE SHULL**

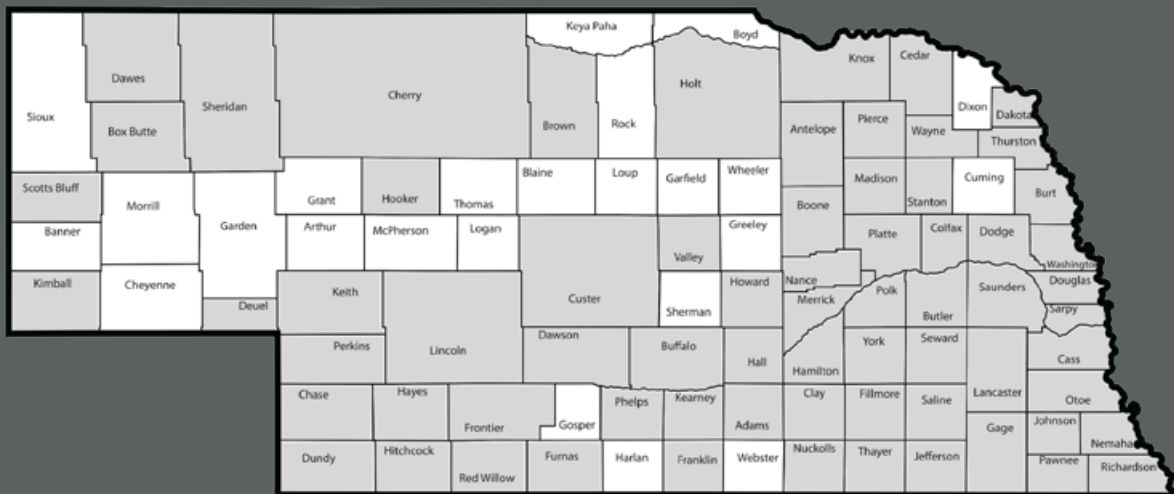
**DWIGHT & BETTE TRUMBLE**

**REV. RICHARD & LOIS URBACH**

**KEITH & RETHA WYCOFF**







Counties with churches or camps using the Foundation's investment services.

## AFFILIATED CHURCHES AND CAMPS

Adams UMC	Davenport UMC	Hastings First UMC	Murdock Ebenezer UMC	Rushville Morse Memorial UMC
Albion First UMC	David City St. Luke's UMC	Hastings Grace UMC	Nebraska City First UMC	St. Paul UMC
Alda UMC	Daykin UMC	Hay Springs UMC	Nehawka First UMC	Sargent First UMC
Alliance UMC	Denton UMC	Hershey UMC	Norfolk First UMC	Scottsbluff First UMC
Arapahoe First UMC	Dewitt UMC	Holdrege First UMC	Norfolk Westridge UMC	Schuyler Christ UMC
Arnold UMC	Doniphan Rosedale UMC	Hooper Faith UMC	North Platte First UMC	Seward UMC Foundation
Ashland UMC	Dorchester UMC	Humboldt UMC	O'Neill First UMC	Shelby UMC
Auburn First UMC	Douglas UMC	Imperial First UMC	Ogallala First UMC	Shelton UMC
Aurora UMC	Eagle UMC	Ithaca UMC	Omaha Clair Memorial UMC	Shickley UMC
Beaver Crossing UMC	Elgin UMC	Johnstown UMC	Omaha Faith-Westwood UMC	Silver Creek UMC
Bellwood UMC	Elkhorn Hills UMC	Kearney Faith UMC	Omaha Grace UMC	South Sioux City St. Paul UMC
Benedict UMC	Elm Creek UMC	Kearney First UMC	Omaha Hanscom Park UMC	Springfield First UMC
Benkelman UMC	Elmwood St. Paul UMC	Kimball Trinity UMC	Omaha Maplewood UMC	Stanton UMC
Blue Springs UMC	Elsie UMC	Laurel UMC	Omaha Olive Crest UMC	Superior First UMC
Broken Bow UMC	Endicott UMC	Lexington First UMC	Omaha Rockbrook UMC	Sutherland UMC
Burwell UMC	Eustis UMC	Lincoln Aldersgate UMC	Omaha St. Andrew's UMC	Table Rock UMC
Cairo UMC	Fairbury UMC	Lincoln Christ UMC	Omaha St. Paul UMC	Tecumseh First UMC
Camp Comeca	Fairmont Community UMC	Lincoln Havelock UMC	Omaha Water's Edge UMC	Tekamah First UMC
Camp Fontanelle	Farnam UMC	Lincoln New Hope UMC	Ong UMC	Trumbull UMC
Camp Norwesca	Franklin First UMC	Lincoln New Visions UMC	Ord First UMC	Tryon Community UMC
Central City Fairview UMC	Franklin Macon UMC	Lincoln South Gate UMC	Ord Mira Valley Evangelical UMC	Utica UMC
Central City UMC	Fremont UMC	Lincoln St. Luke UMC	Osceola First UMC	Valentine UMC
Ceresco UMC	Fremont Calvary UMC	Louisville First UMC	Palisade UMC	Wahoo First UMC
Chadron UMC	Friend UMC	Madison Trinity UMC	Palmyra UMC	Wauneta UMC
Chappell UMC	Genoa UMC	Madrid UMC	Phillips UMC	Waverly First UMC
Clatonia Salem UMC	Gering First UMC	Martell UMC	Pierce UMC	Wayne First UMC
Columbus First UMC	Gibbon Faith UMC	McCook Memorial UMC	Plattsmouth First UMC	Weeping Water UMC
Cozad UMC	Gordon First UMC	McCool Junction UMC	Pleasanton UMC	Wilbur UMC
Creighton Faith United UMC	Gothenburg First UMC	Milford UMC	Ralston Trinity UMC	Wymore First UMC
Crete Grace UMC	Grand Island First-Faith UMC	Minden UMC	Randolph First UMC	
Culbertson Trinity UMC	Greenwood Cedar Hill UMC	Mitchell UMC	Raymond UMC	
Curtis First UMC	Gretna UMC	Mullen First UMC	Rosalie UMC	

# **BOARD OF DIRECTORS AND ADMINISTRATION**

## **OFFICERS**

Dr. Marilyn Moore, Lincoln – Chair  
Randy Gangwish, Shelton – Vice Chair  
Leslie Gibbens, Lincoln – Secretary  
Rev. Jeff Kelley, McCook – Treasurer

## **MEMBERS**

Rev. Stefanie Hayes – Hastings  
Tom Kell – Aurora  
Gene Mercer – Wahoo  
Rev. Charles Murithi – Nebraska City  
Tami O'Dell – Dakota City  
Kristine Roberts – Elkhorn  
Connie Sixta – Norfolk  
Rev. A.G. Turner – Valentine  
Betty Wiles – Omaha  
Vicki Yost – Hastings  
Marilyn Zehring – Columbus  
Bishop Ruben Saenz Jr. – Great Plains Area

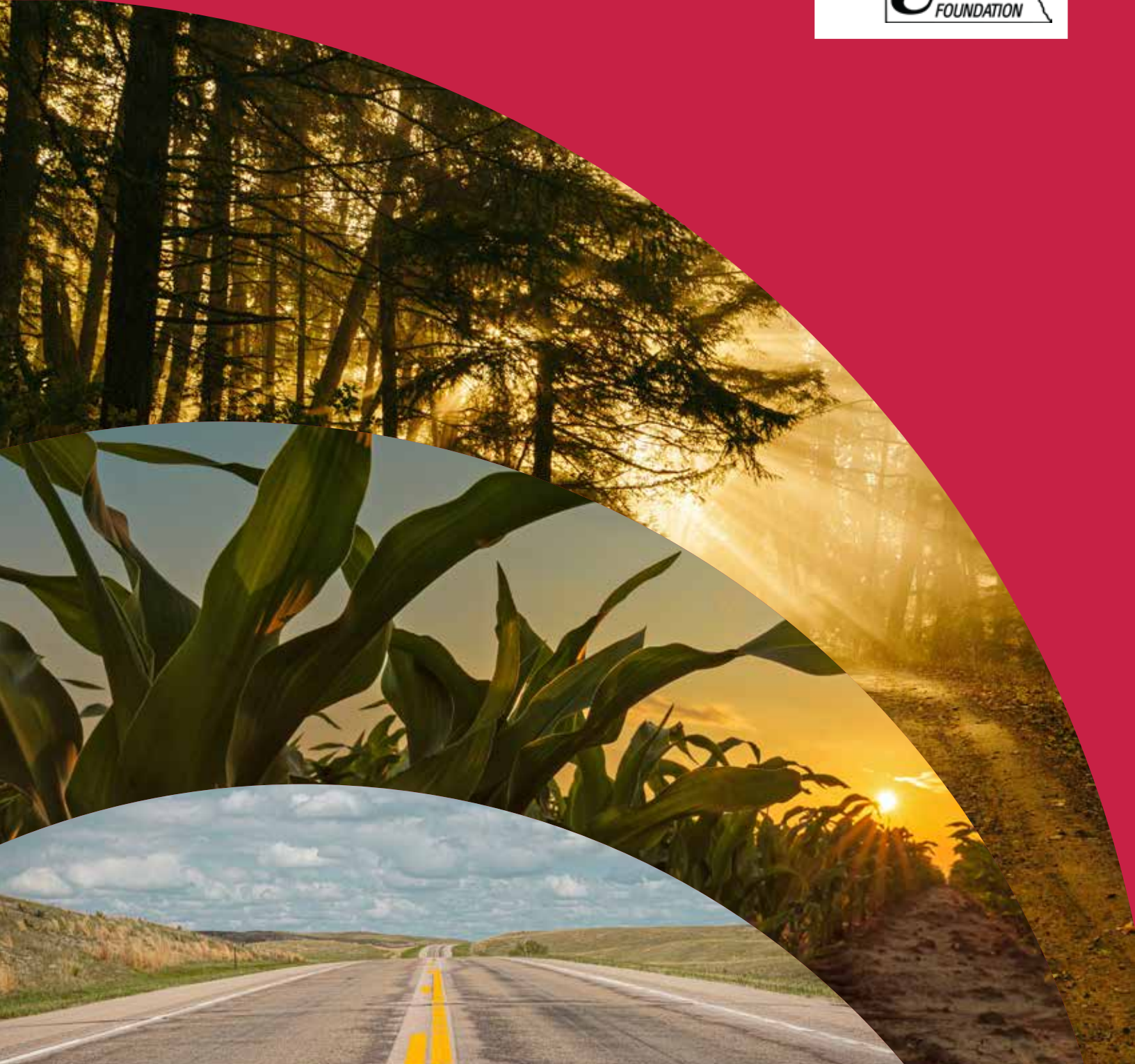
## **EX-OFFICIO REPRESENTATIVES**

Loren Lindahl, Wahoo – Past Chair  
Rev. Lance Clay, Grand Island – District Superintendent

## **FOUNDATION ADMINISTRATION**

Jackie Urkoski, Executive Director  
Marci Logsdon, Director of Finance  
Rev. Dr. F. Matt Fowler, Director of Stewardship  
Christy Bousquet, Administrative Assistant

**THE MISSION OF THE NEBRASKA UNITED METHODIST  
FOUNDATION IS TO SUPPORT THE MINISTRIES OF THE LOCAL  
CHURCH AND THE GREAT PLAINS UNITED METHODIST  
CONFERENCE THROUGH THE DEVELOPMENT OF GIFTS AND  
THE STEWARDSHIP OF RESOURCES ENTRUSTED TO THE  
FOUNDATION IN SUPPORT OF GOD'S WORK.**



■ Publication of the Nebraska United Methodist Foundation Annual Report is made possible, in part, through a grant from the Mary Lackore Endowment Fund at the Foundation.

**NEBRASKA UNITED METHODIST FOUNDATION**  
100 W FLETCHER AVE, STE 100 | LINCOLN, NE 68521  
877.495.5545 | 402.323.8844 | NUMF.ORG